

PRODUCT INDEX 1981

2018 产品索引



广东合和建筑五金制品有限公司
Guangdong HEHE Construction Hardware Manufacturing Co., Ltd.

地址：中国广东佛山市三水区云东海街道永业路1号
ADD: NO.1 Yongye Rd. Yundonghai Street, Sanshui
District, Foshan, Guangdong China
电话 (Tel): 86-757-87310888
传真 (Fax): 86-757-87318666
邮编 (Post Code): 528100 P.R. CHINA
邮箱 (E-mail): master@ss-hehe.com

www.ss-hehe.com



 **HEHE**
合和建筑五金



公司介绍 | Company Profile

广东合和建筑五金制品有限公司，中国现代化门窗幕墙建筑五金生产企业，全面通过和推行ISO9001、ISO14001、OHSAS18001、TS16949认证体系管理标准，拥有铝合金门窗五金、塑料门窗五金、实木门窗五金、家居门窗五金、幕墙门控五金和门窗密封胶条等产品系统大型生产基地。

公司创建于1981年，位于珠三角腹地佛山市三水区云东海街道，拥有省级工程技术研究中心、高新技术企业及国家认可实验室，具备自主产品研发和大规模化生产能力，是国内同时拥有门窗建筑五金及密封胶条双重研发与生产能力的新型现代化企业之一。

合和全国各地均设有销售服务机构，销售网络覆盖各省、直辖市、自治区和特别行政区，并远销100多个国家和地区，被称为“行业技术动态的风向标”。拥有瑞士金马自动涂装线、集成智控大型压铸生产线、智能机器人作业线、进口全自动总装生产线、多条德国克劳斯玛菲橡胶挤出生产线等高端设备，为客户提供高品质产品保障，与国内外众多知名房地产公司成为战略合作伙伴！

合和一直坚持“合作共赢、和谐发展”的经营之道，以创新技术，卓越品质，满分服务，服务于建筑门窗领域，以创新环保合作为原则，将其基于人居环保、节能基础之上的五金产品系统技术应用于门窗，逐步推进产品向标准化、规模化、绿色智能化迈进，建立与塑造深度适应人居建筑环境的高价值产品文化！

为建筑创造价值！

3H INC., is the modern building hardware manufacturer for door, window, and curtain walls' accessories. The company fully passed and implemented ISO9001, ISO14001, OHSAS18001, TS16949 certification system management standards, and we have a large systematic production base for aluminum alloy door and window hardware, UPVC door and window hardware, solid wood doors and windows hardware, home doors and windows hardware, curtain wall door control hardware and doors and windows sealing strips and other products.

3H INC. is established in 1981, located in Yundonghai Street, Sanshui District, Foshan which is the hinterland of Pearl River Delta. 3H INC. has CNAS lab, and won the title of provincial engineering technology R&D center, national high-tech enterprise. Thus, with independent product development and large-scale production capacity, we are one of the new modern enterprises with both R&D and manufacturing capabilities for door & window hardware products and sealing accessories. So, the quality and performance of our products achieve the advanced international level.

3H INC. has sales and service agencies throughout the country, and our sales network covers provinces, municipalities, autonomous regions, and special administrative regions, has exported to more than 100 countries and regions. Obtained more than 300 national patent grants, we are known as the "vane of industry technology trends".

Moreover, 3H INC. has first-class product research and development, process manufacturing data analysis and management system, Switzerland Kinmen and Matsu automatic painting line, integrated intelligent control large-scale die-casting production line, intelligent robot line, import automatic assembly line, several KraussMaffei rubber extrusion production lines and other high-end equipment. Besides, in order to provide customers with high-quality product guarantees, we maintain good and continuous strategic cooperation with more than 200 companies in China's top 500 real estate listings!

We always adhere to the operation principle of "win-win cooperation and harmonious development", and provide innovative technologies, superior quality, and full-service services to the field of doors and windows; based on the principle of innovative environmental protection cooperation, we will base our efforts on environmental protection and energy conservation and let this kind of hardware product system applied to doors and windows. Then, we gradually promote the product to standardization, scale, green and intelligent progress, establish and shape high-value product culture to adapt to the living environment, and strive to do well as below, "Chinese 3H, national brands, leading companies, head to the World"!

Create Value for Construction.



ISO9001:2008 质量管理体系认证
OHSAS18001 职业健康安全管理体系认证
GB/T24001-2016 环境管理体系认证



中国建设行业诚信品牌
中国建设行业诚信品牌
Vice President of CMAA



ECM 认证
ECM Certification



IAF 认证
Global Manufacturer Certificate



DNV 认证
Global Manufacturer Certificate



广东省质量企业
Guangdong Province Quality
products enterprise



广东省服务品牌
Guangdong province Service brand
products enterprise



高新技术企业
High-tech Enterprise



质量管理体系认证证书
Quality Management
System Certificate



CNAS 认证
CNAS Certificate



广东省著名企业
Famous brand enterprise
In Guangdong province



发展历程 DEVELOPMENT

1981年

1981年 成立合和塑胶厂,生产门窗密封胶条及橡胶制品类产品

And following enterprise, established in 1981, production of doors and Windows sealing strip and rubber products

1994年

成立合和不锈钢型材厂[合和兴五金制品厂], 开发出第一代建筑类五金产品

Establishment and stainless steel profile factory/and xing hardware products factory, developed the first generation of construction hardware products

2008年

荣获广东省著名商标更名为广东合和建筑五金制品有限公司

Won the famous trademarks of guangdong province changed its name to guangdong and architectural hardware products co., LTD

2014年

成为中国建筑金属协会建筑门窗配套定点企业获得高新技术产品证书

Chinese architectural metal association building doors and Windows supporting fixed-point enterprise obtain certificate of high-tech products

2015年

获得国家实验室并取得国家认可证书;2016年获得国家高新技术企业称号

Access to the national laboratories and obtain the approval certificate; In 2016 won the award for the national high and new technology enterprise

2016年

高新技术企业
广东省名牌产品

Hi-Tech Enterprise
Guangdong province famous brand product

2017年

省级企业技术中心

Provincial enterprise technical center

2018年

中国合格评定国家认可委员会
年度建筑五金十大品牌

China National Accredited Conformity Committee
Top 10 building hardware brands of the Year



企业文化 THE ENTERPRISE CULTURE

定位 POSITIONING

以合和品牌引导消费，以优良服务争取市场。
To Guide The Consumption And Brand, With Good Service For The Market.

理念 CONCEPT

合作共赢，和谐发展。
Win-win cooperation and harmonious development.

使命 MISSION

为建筑创造价值
Create Value For Construction



工程案例 Samples Of Projects



南通万科城市之光
Vanke City lights Nantong



马来西亚·富力公主湾
R&F Princess Cove Johor Bahru



广州塔
Canton Tower

工程案例 Samples Of Projects



三亚美丽之冠
Vanke City lights Nantong



惠州棕榈岛渡假村
Huizhou Palm islands resort



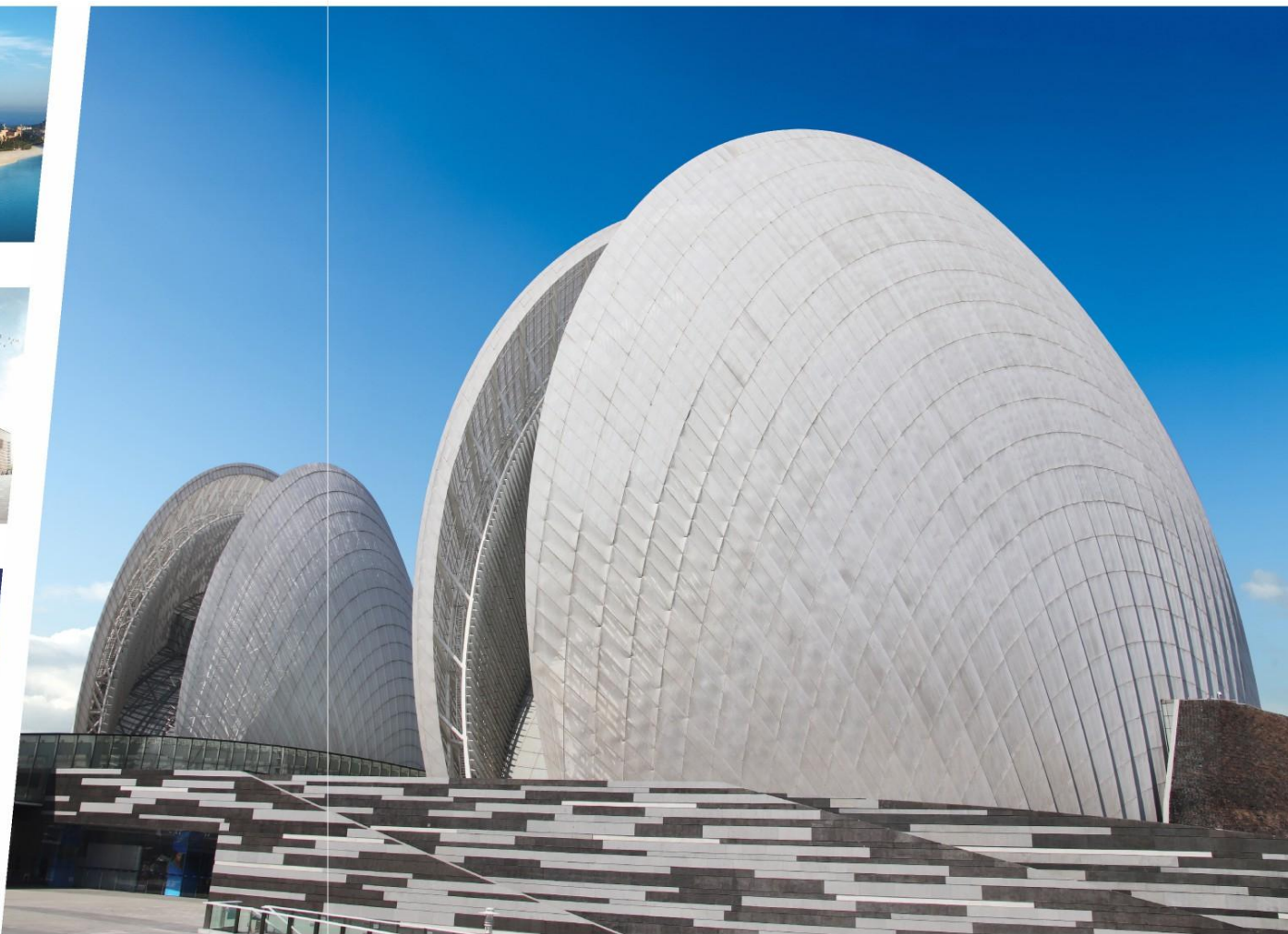
重庆照母山·恒大山水城
Evergrande Landscape city Chongqing Zhaomu Mountain



济宁文化中心
Jining Culture Center

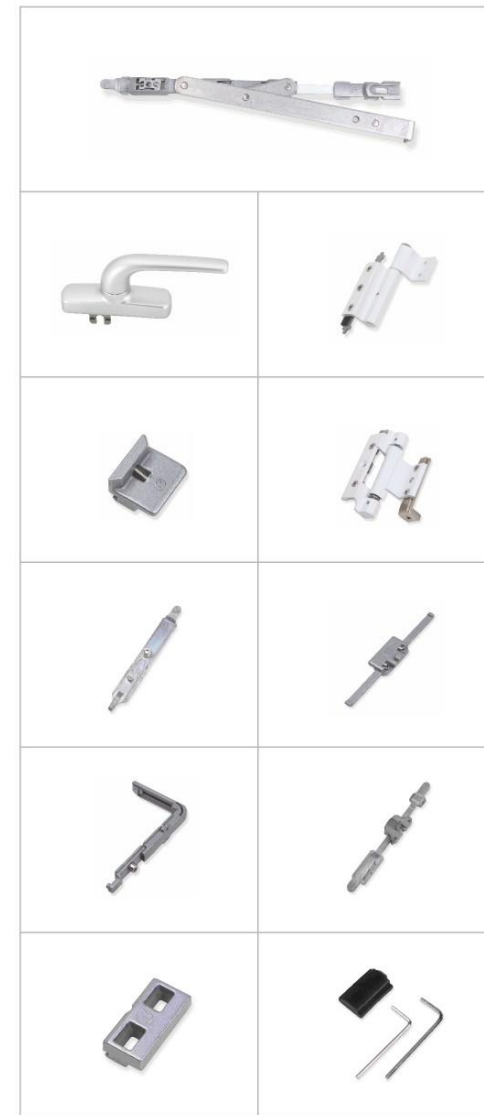


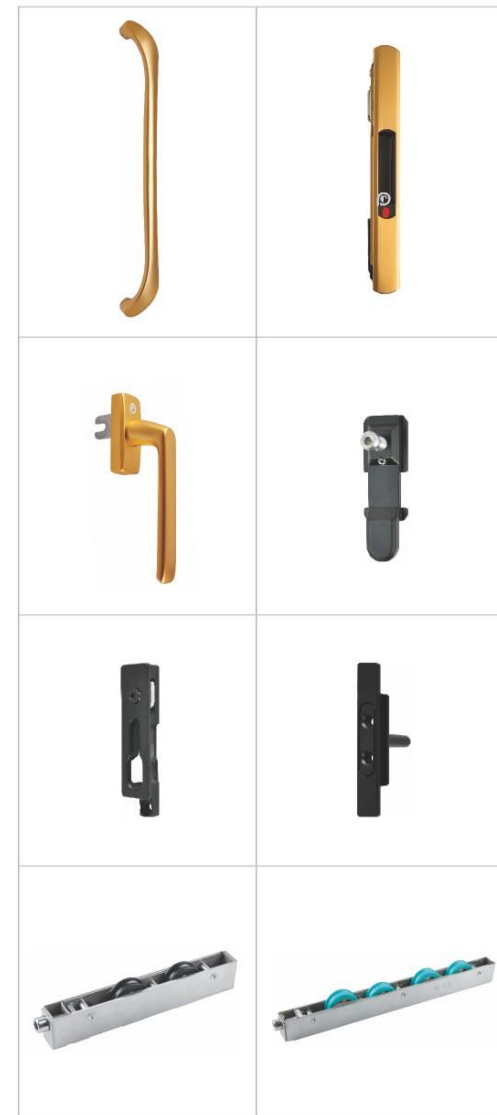
首创旭辉 First creation of Xuhui City

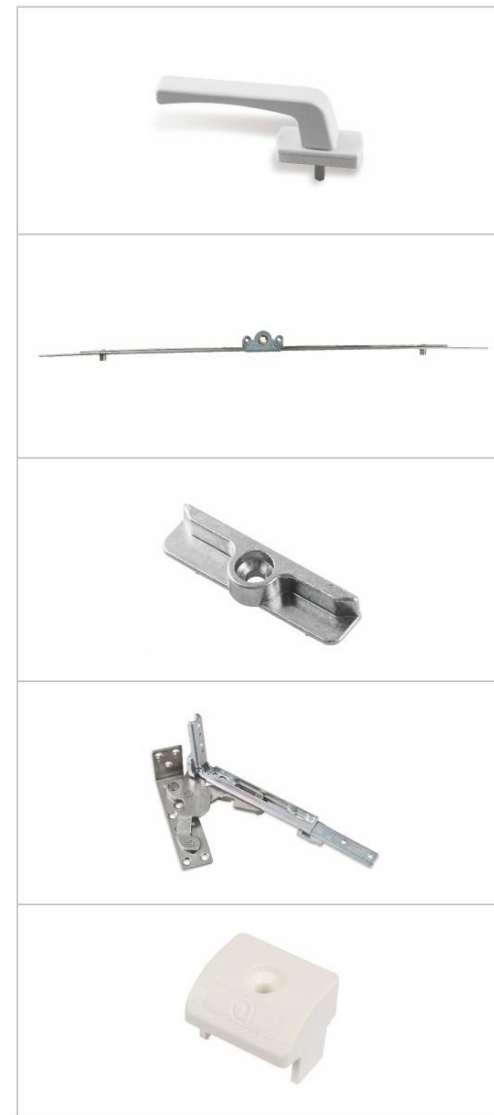


珠海大剧院 Zhuhai Opera House

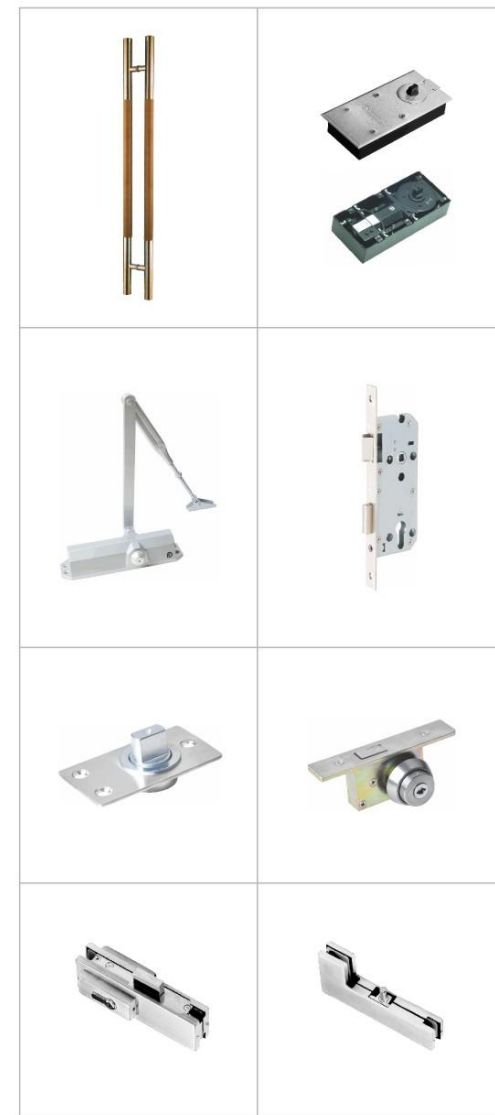
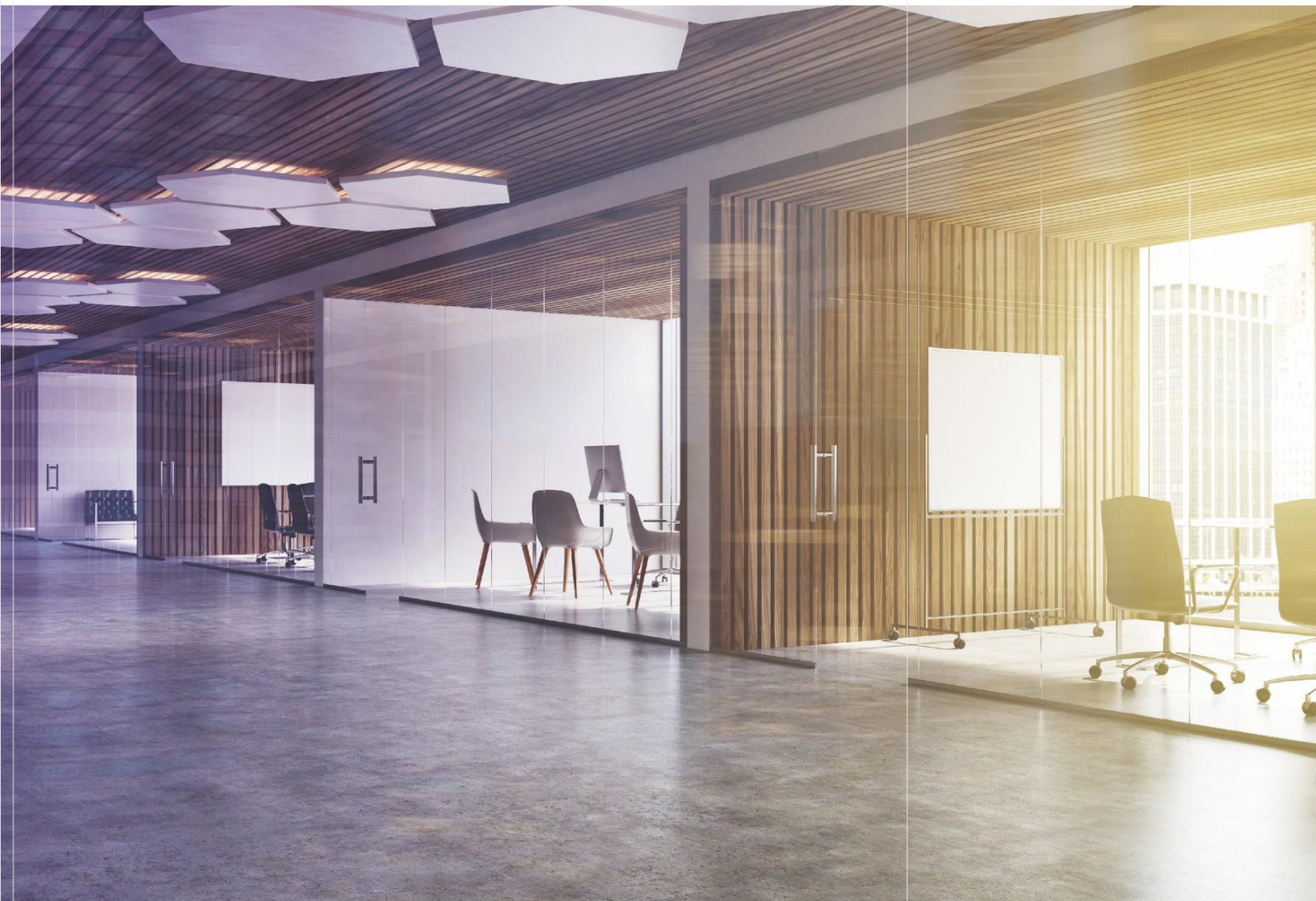
铝合金门窗五金配件系列
ALUMINUM SERIES DOOR AND
WINDOW HARDWARE ACCESSORIES



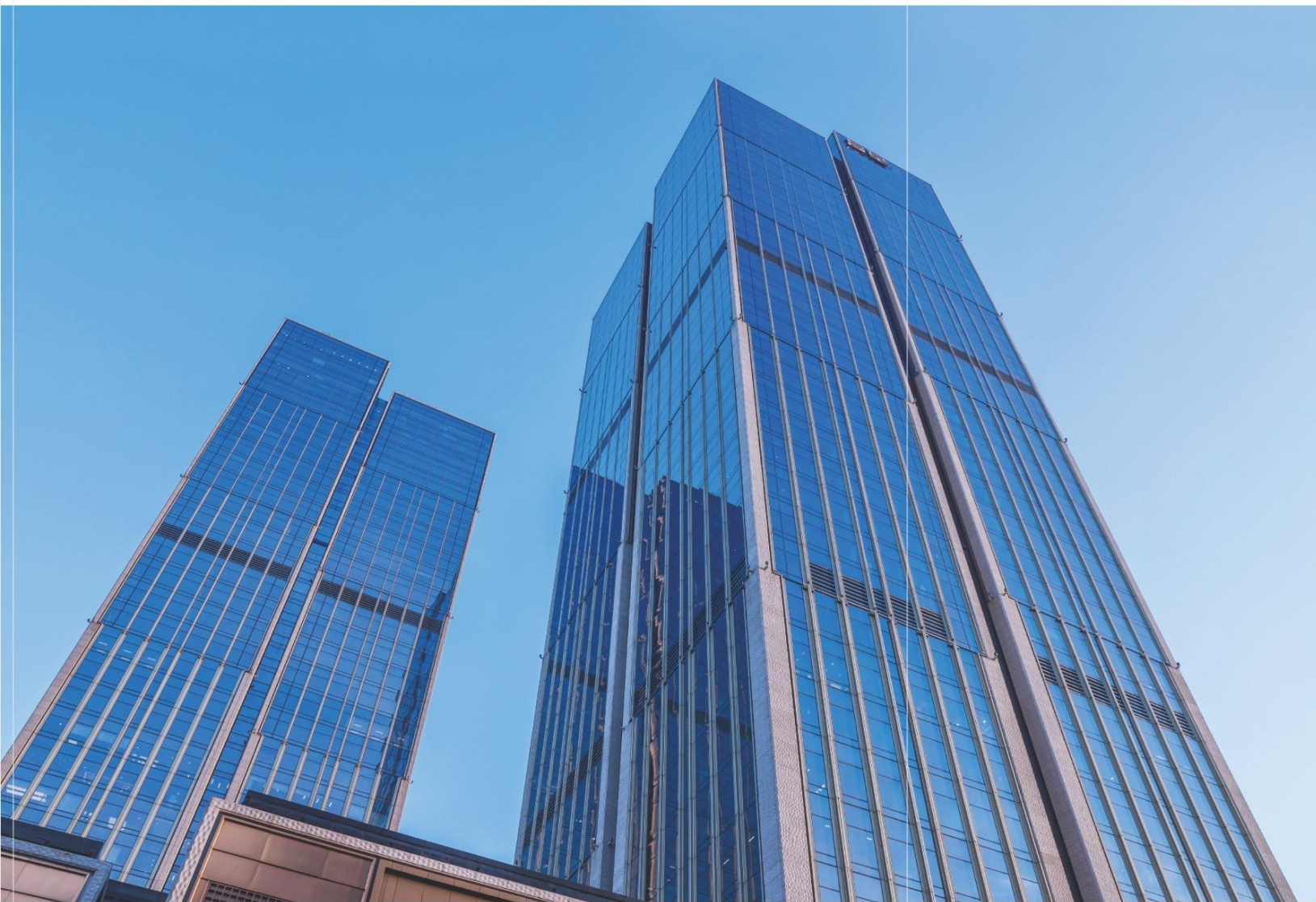




幕墙门控五金配件系列
CURTAIN WALL AND DOOR
CONTROL HARDWARE ACCESSORIES



| 门窗幕墙密封胶条系统
DOORS AND WINDOWS CURTAIN WALL
RUBBER SEAL SYSTEM





合页系列 HINGE SERIES

FJX02

1. 适用于平开门、窗。
 2. 窗用时合页最大承重: 100kg/对;
 3. 门用时合页最大承重: 200kg/对。
 4. 采用优质碳素结构钢精铸而成。
 5. 满足甲级耐火要求。
 6. 安装时, 安装螺钉需固定在型材内部钢衬。
1. Suitable for casement door and window
 2. When installed at the window, the load-bearing of hinge is 100kg/pair;
 3. When installed at the door, the load-bearing of hinge is 200kg/pair;
 4. Adopting the high-quality carbon steel
 5. Satisfy the A grade fireproof requirement
 6. While installation, the screw should be fixed at the internal steel lining of the profile

执手系列 HANDLE SERIES

FCZH01

1. 执手不分左右。
2. 执手符合乙级防火标准。

1. No left and right version
2. Handle conform to Class B fire protection standard.





执手系列 HANDLE SERIES

CZH26

1. 不分左右
2. 拨叉长度26mm可根据客户要求定制外露长度
1. No left and right version
2. Fork length is 26mm,the outside length of fork we can make as per customer requirement.

执手系列 HANDLE SERIES

JCZH10

表面处理: 氧化
拨叉长度: 35、45、58、68mm;
拨叉外露长度可按客户要求订做
Surface treatment: Anodization
Fork length: 35, 45, 58, 68mm, or customizable





执手系列 HANDLE SERIES

PCZ18

1. 常规方轴规格: 7mmx7mm
2. 方轴外露长度 (L): 34mm
3. 使用于 9 系列型材时配 M5x40mm 螺丝
4. 使用于 13 系列型材时配 M5x45mm 螺丝
1. Regular square shaft specifications: 7mmx7mm
2. Square shaft exposed length: 34 mm
3. When used in series 9 profiles with M5x40mm screw
4. When used in 13 series profiles with M5x45mm screw

滑撑系列 FRICTION STAY SERIES

HHKX系列上悬窗滑撑

1. 用最优良的304不锈钢制造。
2. 可根据客户要求, 订制开启角度。
3. 用于上悬窗中, 可单独使用, 用于重型窗时需增加支撑。
4. 符合JG/T 127-2017《建筑门窗五金件—滑撑》标准。

1. **Material:** excellent 304stainless steel
2. opening angel can be produced based on customers' requirement
3. For lighter window, use single pair. For heavier one,extra supporting arm is need.
4. Comply with JG/T 127-2017 standards.





铰链系列 HINGE SERIES-ROTTOM HINGE

PJYC01

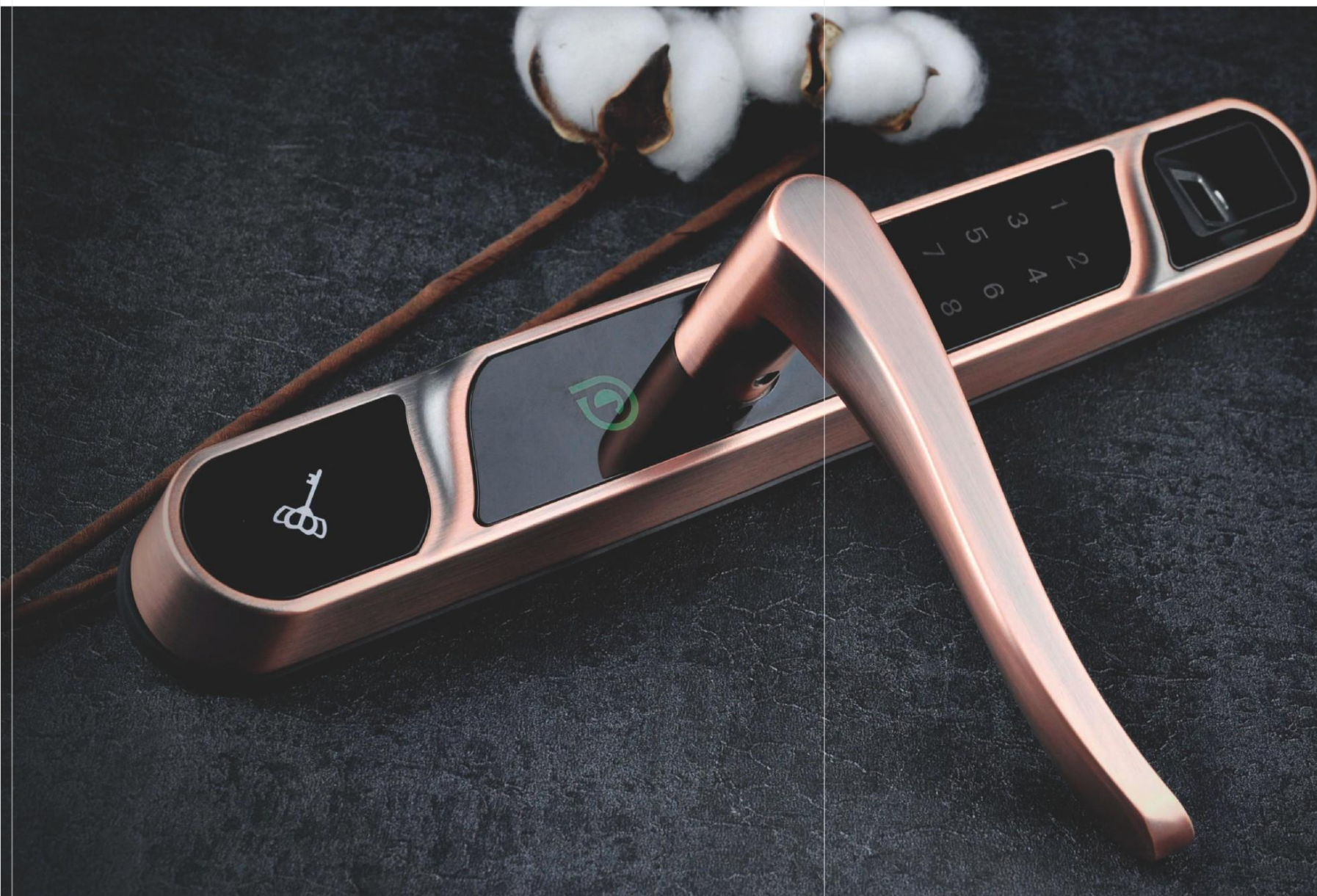
1. 隐形合页(9系列)
 2. 使用于内平开窗塑钢型材, 具体按型材截面图配置。
 3. 不建议使用在外平开窗
 4. 左右为1套, 最大承重:35kg
1. Concealed hinge (9 series)
 2. Use for inward casement window
 3. Not prefer to outwards casement window
 4. left and right as one set, max loading:35kg

合页系列 HINGE SERIES

JX12A

1. 适用于标准欧式20槽平开门窗。
 2. 合页最大承重:80kg/对。
 3. 具体承重能力与合页安装和型材有关。
 4. 建设部门窗配套委员会推荐产品。
1. Apply to European standard (20mm groove) casement window & door.
 2. Maximum load: 80kg/pair
 3. The load of hinge is relevant to hinge installation and profile.
 4. The product recommended by the window accessories Committee Of Construction Department.





指纹锁系列 FINGERPRINT LOCK SERIES

FPL02

颜色: 红古铜
尺寸: 290 × 40 × (23+28)
适用门型: 铝型材门、室内木门
适合门厚度: 任意厚度
典型静态电流: < 50 μA (电池寿命可超过一年)
电源供应: 4.5V-6.5V (4节7#电池)
应急电源: DC5V (备用应急接口)
Color: real bronze
Size: 290 × 40 × (23+28)
Applicable door type: aluminum door, interior wooden doors
Suitable for the thickness of the door: arbitrary thickness
Typical static current: < 50 μA (battery life can be more than one year)
Power supply: 4.5-6.5V (4 batteries (section 4))
Emergency power: DC5V (standby emergency interface)



地弹簧系列 FLOOR SPRING SERIES

B-120

1. 主机铸件由数十年压铸经验的台湾独资企业提供。
2. 主要组合部件，全部以CR-MO合金钢经锻造成型，调质与淬火热处理，经研磨后，零件全部浸入高品质耐低温的液压油。在-20°C至+40°C的温度时均使用正常。
3. 内置减压阀，使主机在外来强压或强风等环境下，受到保护，防止损坏或漏油。
4. 准确的定位性能，无论是向外或向内都能0°定位，当门开启到90°时，将被准确自动定位。
5. 本产品运转50万次后，经国家技术监督部门鉴定，品质稳定运转正常，符合技术标准。

1. The main casting is provided by Taiwan owned enterprise with rich die-casting experience.
2. The main components are made from CR-MO steel after quenching. The high quality hydraulic oil help to make the floor spring work properly in -20°C to 40°C.
3. There is a built-in valve to protect the floor spring from strong wind also prevent oil leakage.
4. The floor spring can be hold precisely at 0 degree or 90 degree.
5. Service life is 500,000 cycles according to national standard.

闭门器系列 DOOR CLOSER SERIES

ITS-96V

1. 采用隐藏式凸轮传动闭门系统，凸轮传动闭门器开创了闭门器技术的新纪元，可双面开启，闭门器机体以及摇臂可完全隐藏安装于门体和门框内。隐藏式凸轮闭门器结构精巧，使用舒适应用广泛。
2. 闭门器的内部零件经过精密数控机械加工制作而成，使每个产品都稳定、一致，让整体工作效能保持恒定。
3. 采用超强抗拉强度的进口德制合金钢弹簧。
4. 采用滚珠轴承，使闭门器达到最优的性能和效率。
5. 整体设计紧凑，工作性能可靠稳定，让产品适用于各种安装环境。
6. 闭门器配用高品质的液压油，使得所有机件运作顺畅、减少磨损，极大提高了产品的使用寿命。

1. The main casting is provided with Taiwan owned enterprises, which have rich die-casting experiences.
2. The main components, all with CR-MO steel after forging, quenching and tempering and quenching, after grinding, hydraulic parts all immersed in the high-quality low temperature resistance. In the -20°C to +40°C temperature are properly used.
3. The built-in valve, so that the host receives protection in foreign strong pressure or strong wind environment, prevent damage or leakage.
4. Fixed point properties accurately, either outwards or inwards to 0° positioning, the door is opened to 90°, will be accurate and automatic positioning.
5. This product is running 500000 times, identified by the national technical supervision departments, quality stable and normal operation, in accordance with the technical standards



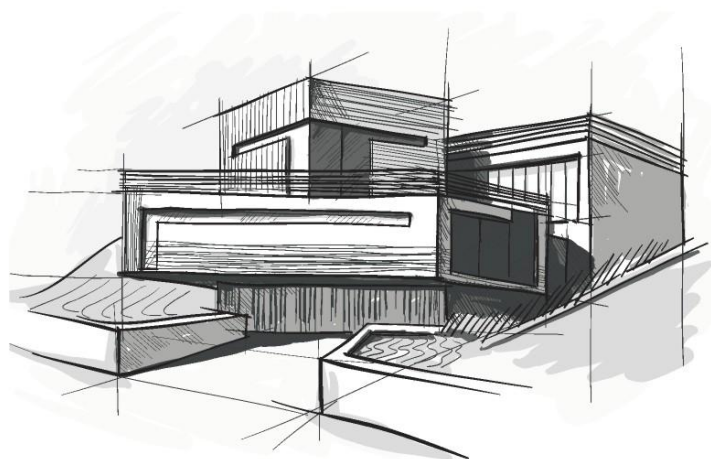


传动锁闭器系列 TRANSMISSION DEVICE SERIES

1. 传动锁闭器是通过转动执手对门窗实现施多点启闭功能的一种装置。
 2. 耐腐蚀NSS试验达到96小时, 保护等级大于等于8级。
 3. 反复启闭30000次, 各零部件无扭曲, 不影响使用。
1. Transmission device is a kind of device achieved the function of window and door opening by turning handle.
 2. Corrosion resistant NSS test reach 96 hours, the degree of protection is not less than 8 grades.
 3. Repeatedly opening and closing 30000 times, all the parts without distortion and don't affect use.







铝合金门窗五金
电子图册



家居门窗五金
电子图册



塑料门窗五金
电子图册



幕墙门控五金
电子图册



指纹锁电子图册



密封胶条电子图册

